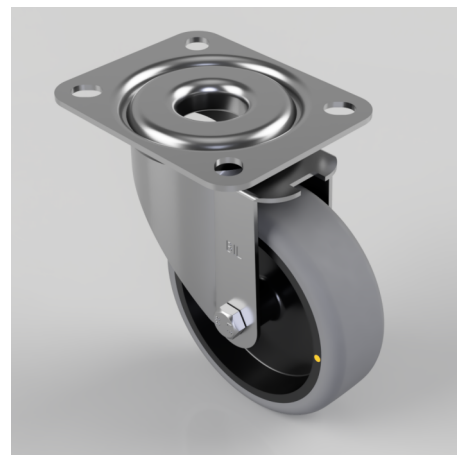


## Electrically Conductive Rubber Plate Swivel Castor 100mm 90kg Load

**Product code: BZMM100GREC**

Pressed steel swivel castor with a top plate fixing fitted with a non marking grey electrically conductive rubber wheel on a polypropylene centre. Wheel diameter 100mm, tread width 32mm, overall height 128mm, top plate 105mm x 85mm, hole centres 80mm x 60mm Load capacity 90kg. Conductive offers a resistance  $R < 10 \Omega$



|                          |   |
|--------------------------|---|
| Diameter (mm)            | 100   |
| Castor Type              | Swivel  |
| Fixing Option            | Plate   |
| Height (mm)              | 128   |
| Wheel Material           | Electrically Conductive Rubber                                |
| Colour / Shore Hardness  | Grey Electrically Conductive Rubber on Nylon Rim / 85 Shore A |
| Temperature Resistance   | -15 °C TO +80 °C  |
| Bearing Type             | Plain   |
| Load Capacity (kg)       | 90  |
| Tread (mm)               | 32  |
| Swivel Radius (mm)       | 84  |
| Plate Size (mm)          | 105 X 85  |
| Hole Centres (mm)        | 80 X 60   |
| Top Plate Thickness (mm) | 2.5   |
| Fork Thickness (mm)      | 2   |
| To Suit Fixing Bolt (mm) | 8   |

## BIL GROUP LTD

Porte Marsh Road, Calne, Wiltshire, SN11 9BW

Registered in England No: 2603821

VAT Reg: GB572705729

