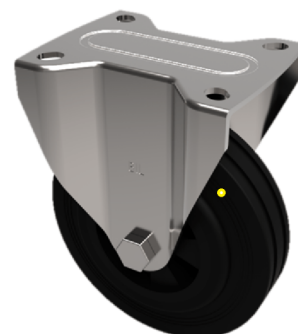


Electrically Conductive Rubber Plate Fixed Castor 80mm 100kg Load

Product code: SSMMF80RNBJEC

Grade 304 stainless steel fixed castor with a top plate fixing fitted with a 65 shore A black elastic electrically conductive rubber wheel on a black nylon centre with a ball bearing (NB the ball bearing is not stainless steel). Wheel diameter 80mm, tread width 35mm, overall height 105mm, top plate 105mm x 85mm, hole centres 80mm x 60mm Load capacity 100kg. Conductivity range is 10^3 ohm to 10^4 ohm



| | |
|--------------------------|--|
| Diameter (mm) | 80 |
| Fixing Option | Plate |
| Castor Type | Fixed |
| Height (mm) | 105 |
| Wheel Material | Rubber on Nylon |
| Colour / Shore Hardness | Black Elastic Rubber on Nylon Rim / 65 Shore A |
| Bearing Type | Ball |
| Tread (mm) | 35 |
| Fork Thickness (mm) | 2 |
| To Suit Fixing Bolt (mm) | 8 |
| Load Capacity (kg) | 100 |
| Temperature Resistance | -20 °C TO +60 °C |
| Plate Size (mm) | 105 X 85 |
| Hole Centres (mm) | 80 X 60 |
| Top Plate Thickness (mm) | 2 |

BIL GROUP LTD

Porte Marsh Road, Calne, Wiltshire, SN11 9BW

Registered in England No: 2603821

VAT Reg: GB572705729

