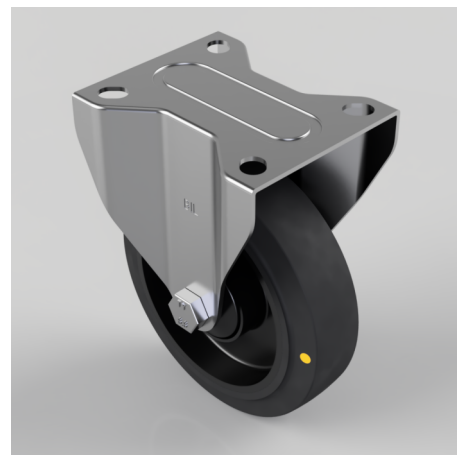


Electrically Conductive Rubber Plate Fixed Castor 125mm 200kg Load

Product code: BZMMF125RNBJEC

Pressed steel fixed castor with a top plate fixing fitted with a 65 shore A black elastic electrically conductive rubber wheel on a black nylon centre with a ball bearing. Wheel diameter 125mm, tread width 36mm, overall height 155mm, top plate 105mm x 85mm, hole centres 80mm x 60mm Load capacity 200kg. Conductivity range is 10^3 ohm to 10^4 ohm



Diameter (mm)	125
Castor Type	Fixed
Fixing Option	Plate
Height (mm)	155
Wheel Material	Rubber on Nylon
Colour / Shore Hardness	Blue Rubber on Nylon Rim / 75 Shore A
Temperature Resistance	-20 °C TO +60 °C
Bearing Type	Ball
Load Capacity (kg)	200
Tread (mm)	36
Plate Size (mm)	105 X 85
Hole Centres (mm)	80 X 60
Top Plate Thickness (mm)	2
Fork Thickness (mm)	2
To Suit Fixing Bolt (mm)	8

BIL GROUP LTD

Porte Marsh Road, Calne, Wiltshire, SN11 9BW

Registered in England No: 2603821

VAT Reg: GB572705729

