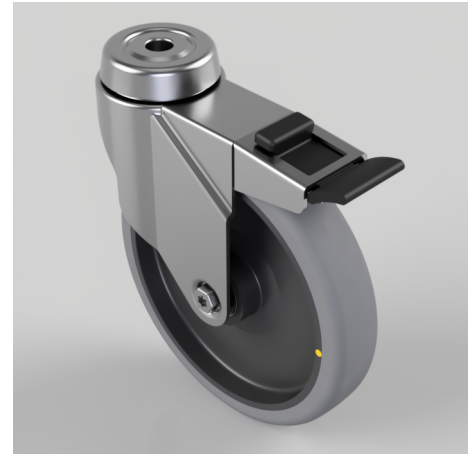


Electrically Conductive Rubber Bolt Hole Swivel Castor Brake 125mm 100kg

Product code: BZM125GRECBJBH12SWB

Pressed steel swivel castor with a 12mm bolt hole fitted with a grey electrically conductive rubber on black polypropylene centred wheel with ball bearing and a total lock brake, Wheel diameter 125mm, 32mm tread width, 156mm overall height, with a load capacity of 100kg. Conductive offers a resistance $R < 10 \Omega$



Diameter (mm)	125
Fixing Option	Bolt Hole
Castor Type	Swivel with Total Lock Brake
Head Dia (mm)	57
Height (mm)	156
Bearing Type	Ball
Swivel Radius (mm)	107
Wheel Material	Electrically Conductive Rubber
Colour / Shore Hardness	Grey Electrically Conductive Rubber on Nylon Rim / 85 Shore A
Fork Thickness (mm)	2
Temperature Resistance	-15 °C TO +80 °C
To Suit Fixing Bolt (mm)	12
Tread (mm)	32
Load Capacity (kg)	100

BIL GROUP LTD

Porte Marsh Road, Calne, Wiltshire, SN11 9BW

Registered in England No: 2603821

VAT Reg: GB572705729

