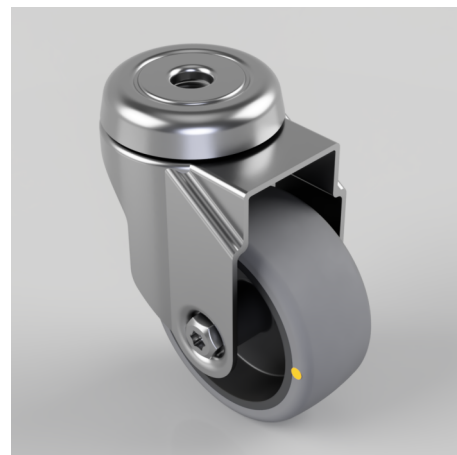


Electrically Conductive Rubber Bolt Hole Swivel Castor 75mm 70kg Load

Product code: BZM75GRECBH12

Pressed steel swivel castor with a 12mm bolt hole fitted with a grey electrically conductive tyre on a black polypropylene centred wheel with plain bore. Wheel diameter 75mm, tread width 32mm, overall height 109mm, Load capacity 70kg. Conductive offers a resistance $R < 10 \Omega$



Diameter (mm)	75
Fixing Option	Bolt Hole
Castor Type	Swivel
Head Dia (mm)	57
Height (mm)	109
Bearing Type	Plain
Swivel Radius (mm)	66
Wheel Material	Electrically Conductive Rubber
Colour / Shore Hardness	Grey Electrically Conductive Rubber on Nylon Rim / 85 Shore A
Fork Thickness (mm)	2
Temperature Resistance	-15 °C TO +80 °C
To Suit Fixing Bolt (mm)	12
Tread (mm)	32
Load Capacity (kg)	70

BIL GROUP LTD

Porte Marsh Road, Calne, Wiltshire, SN11 9BW

Registered in England No: 2603821

VAT Reg: GB572705729

