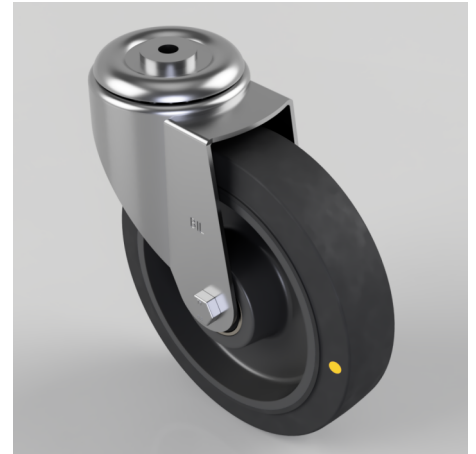


Electrically Conductive Rubber Bolt Hole Swivel Castor 200mm 350kg Load

Product code: BZMM200RNBJECH12

Pressed steel swivel castor with a 12mm bolt hole fitted with a 65 shore A black elastic electrically conductive rubber wheel on a black nylon centre with ball bearings. Wheel diameter 200mm, tread width 50mm, overall height 235mm, Load capacity 350kg. Conductivity range is 10^3 ohm to 10^4 ohm



Diameter (mm)	200
Castor Type	Swivel
Fixing Option	Bolt Hole
Height (mm)	235
Wheel Material	Rubber on Nylon
Colour / Shore Hardness	Blue Rubber on Nylon Rim / 75 Shore A
Temperature Resistance	-20 °C TO +60 °C
Bearing Type	Ball
Load Capacity (kg)	350
Tread (mm)	50
Swivel Radius (mm)	168
Head Dia (mm)	90
Fork Thickness (mm)	3
To Suit Fixing Bolt (mm)	12