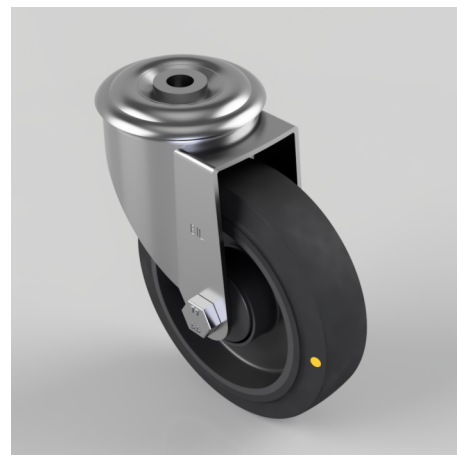


Electrically Conductive Rubber Bolt Hole Swivel Castor 125mm 200kg Load

Product code: BZMM125RNBJECH12

Pressed steel swivel castor with a 12mm bot hole fitted with a 65 shore A black elastic electrically conductive rubber wheel on a black nylon centre with a ball bearing. Wheel diameter 125mm, tread width 36mm, overall height 155mm, Load capacity 200kg. Conductivity range is 10^3 ohm to 10^4 ohm



Diameter (mm)	125
Castor Type	Swivel
Fixing Option	Bolt Hole
Height (mm)	155
Wheel Material	Rubber on Nylon
Colour / Shore Hardness	Blue Rubber on Nylon Rim / 75 Shore A
Temperature Resistance	-20 °C TO +60 °C
Bearing Type	Ball
Load Capacity (kg)	200
Tread (mm)	36
Swivel Radius (mm)	104
Head Dia (mm)	76
Fork Thickness (mm)	2.5
To Suit Fixing Bolt (mm)	12

BIL GROUP LTD

Porte Marsh Road, Calne, Wiltshire, SN11 9BW

Registered in England No: 2603821

VAT Reg: GB572705729

