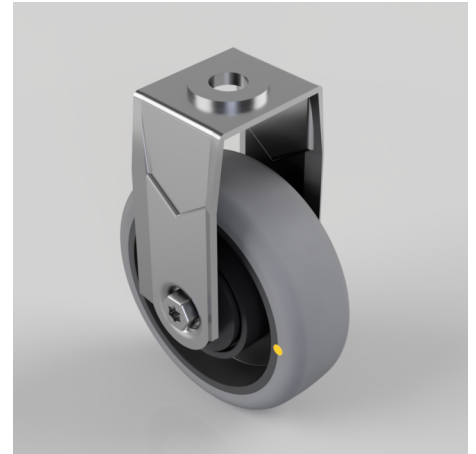


Electrically Conductive Rubber Bolt Hole Fixed Castor 75mm 60kg Load

Product code: BZRAF75GRECBJBH10

Pressed steel fixed castor with a 10mm bolt hole fitted with a grey electrically conductive rubber tyre on polypropylene centred wheel with ball bearings. Wheel diameter 75mm, tread width 24mm, overall height 101mm with a Load capacity 60kg. Conductive offers a resistance $R < 10 \Omega$ ****MANUFACTURED TO ORDER****



| | |
|--------------------------|---|
| Diameter (mm) | 75 |
| Fixing Option | Bolt Hole |
| Castor Type | Fixed |
| Head Dia (mm) | 21 |
| Height (mm) | 101 |
| Bearing Type | Ball |
| Wheel Material | Electrically Conductive Rubber |
| Colour / Shore Hardness | Grey Electrically Conductive Rubber on Nylon Rim / 85 Shore A |
| Fork Thickness (mm) | 1.8 |
| Temperature Resistance | -15 °C TO +80 °C |
| To Suit Fixing Bolt (mm) | 10 |
| Tread (mm) | 24 |
| Load Capacity (kg) | 60 |

BIL GROUP LTD

Porte Marsh Road, Calne, Wiltshire, SN11 9BW

Registered in England No: 2603821

VAT Reg: GB572705729

