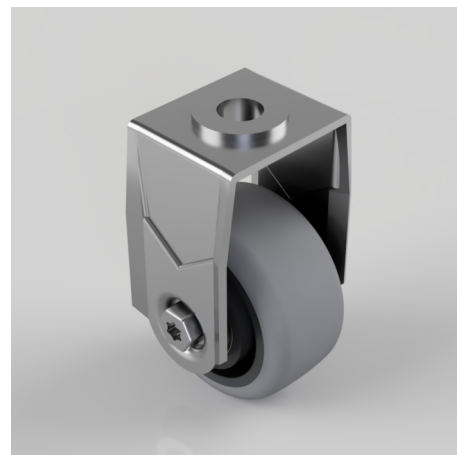


## Electrically Conductive Rubber Bolt Hole Fixed Castor 50mm 50kg Load

**Product code: BZRAF50GRECBJBH10**

Pressed steel fixed castor with a 10mm bolt hole fitted with a grey electrically conductive rubber tyre on polypropylene centred wheel with ball bearing. Wheel diameter 50mm, tread width 24mm, overall height 74mm with a Load capacity 50kg. Conductive offers a resistance  $R < 10 \Omega$  **\*\*MANUFACTURED TO ORDER\*\***



|                          |   |
|--------------------------|---|
| Diameter (mm)            | 50  |
| Fixing Option            | Bolt Hole   |
| Castor Type              | Fixed   |
| Head Dia (mm)            | 21  |
| Height (mm)              | 74  |
| Bearing Type             | Ball  |
| Wheel Material           | Electrically Conductive Rubber                                |
| Colour / Shore Hardness  | Grey Electrically Conductive Rubber on Nylon Rim / 85 Shore A |
| Fork Thickness (mm)      | 1.8   |
| Temperature Resistance   | -15 °C TO +80 °C  |
| To Suit Fixing Bolt (mm) | 10  |
| Tread (mm)               | 24  |
| Load Capacity (kg)       | 50  |

## BIL GROUP LTD

Porte Marsh Road, Calne, Wiltshire, SN11 9BW

Registered in England No: 2603821

VAT Reg: GB572705729

