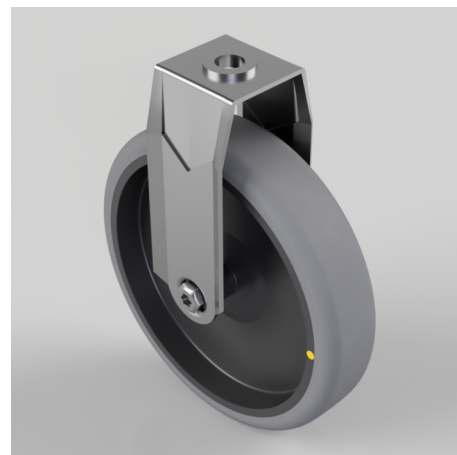


## Electrically Conductive Rubber Bolt Hole Fixed Castor 150mm 100kg Load

**Product code: BZMF150GRECBH12**

Pressed steel fixed castor with a 12mm bolt hole fitted with a grey electrically conductive rubber on grey polypropylene centred wheel with a plain bore, Wheel diameter 150mm, 32mm tread width, 181mm overall height, with a load capacity of 100kgs. Conductive offers a resistance  $R < 10 \Omega$



|                          |   |
|--------------------------|---|
| Diameter (mm)            | 150   |
| Fixing Option            | Bolt Hole   |
| Castor Type              | Fixed   |
| Head Dia (mm)            | 22  |
| Height (mm)              | 181   |
| Bearing Type             | Plain   |
| Wheel Material           | Electrically Conductive Rubber                                |
| Colour / Shore Hardness  | Grey Electrically Conductive Rubber on Nylon Rim / 85 Shore A |
| Fork Thickness (mm)      | 2   |
| Temperature Resistance   | -15 °C TO +80 °C  |
| To Suit Fixing Bolt (mm) | 12  |
| Tread (mm)               | 32  |
| Load Capacity (kg)       | 100   |

## BIL GROUP LTD

Porte Marsh Road, Calne, Wiltshire, SN11 9BW

Registered in England No: 2603821

VAT Reg: GB572705729

