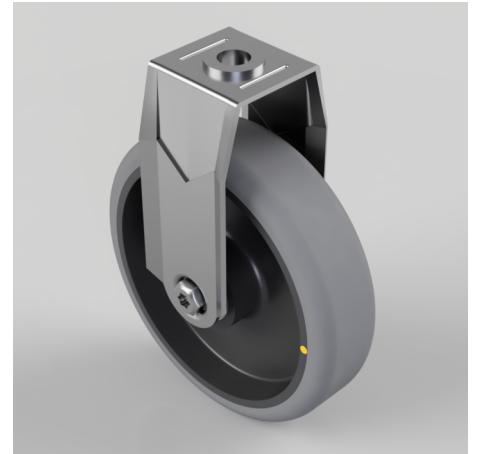


Electrically Conductive Rubber Bolt Hole Fixed Castor 150mm 100kg Load

Product code: BZMF150GRECBJBH12

Pressed steel fixed castor with a 12mm bolt hole fitted with a grey electrically conductive rubber on grey polypropylene centred wheel with ball bearings, Wheel diameter 150mm, 32mm tread width, 181mm overall height, with a load capacity of 100kgs. Conductive offers a resistance $R < 10 \Omega$



Diameter (mm)	150
Fixing Option	Bolt Hole
Castor Type	Fixed
Head Dia (mm)	57
Height (mm)	181
Bearing Type	Ball
Wheel Material	Electrically Conductive Rubber
Colour / Shore Hardness	Grey Electrically Conductive Rubber on Nylon Rim / 85 Shore A
Fork Thickness (mm)	2
Temperature Resistance	-15 °C TO +80 °C
To Suit Fixing Bolt (mm)	12
Tread (mm)	32
Load Capacity (kg)	100

BIL GROUP LTD

Porte Marsh Road, Calne, Wiltshire, SN11 9BW

Registered in England No: 2603821

VAT Reg: GB572705729

