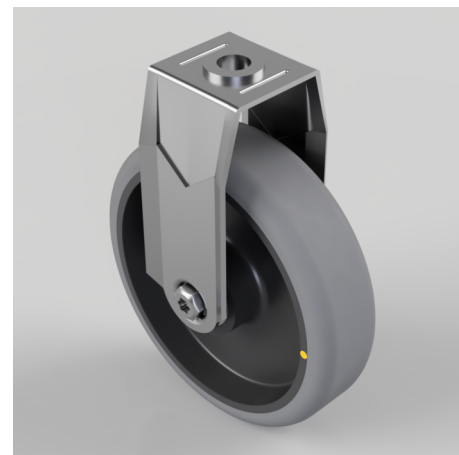


## Electrically Conductive Rubber Bolt Hole Fixed Castor 125mm 90kg Load

**Product code: BZMF125GRECBJBH12**

Pressed steel fixed castor with a 12mm bolt hole fitted with a grey electrically conductive rubber on black polypropylene centred wheel with ball bearing, Wheel diameter 125mm, 32mm tread width, 156mm overall height, with a load capacity of 90kgs. Conductive offers a resistance  $R < 10 \Omega$

**\*\*MANUFACTURED TO ORDER\*\***



Diameter (mm)	125
Fixing Option	Bolt Hole
Castor Type	Fixed
Head Dia (mm)	22
Height (mm)	156
Bearing Type	Ball
Wheel Material	Electrically Conductive Rubber
Colour / Shore Hardness	Grey Electrically Conductive Rubber on Nylon Rim / 85 Shore A
Fork Thickness (mm)	2
Temperature Resistance	-15 °C TO +80 °C
To Suit Fixing Bolt (mm)	12
Tread (mm)	32
Load Capacity (kg)	90

## BIL GROUP LTD

Porte Marsh Road, Calne, Wiltshire, SN11 9BW

Registered in England No: 2603821

VAT Reg: GB572705729

