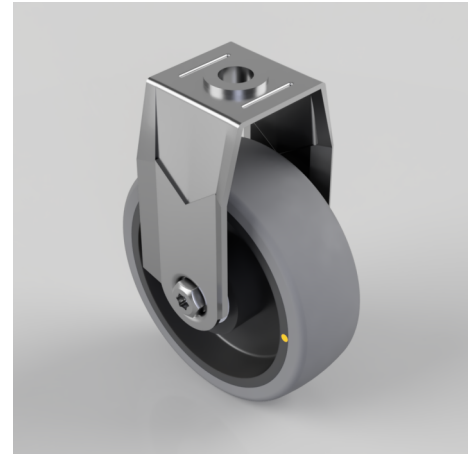


Electrically Conductive Rubber Bolt Hole Fixed Castor 100mm 90kg Load

Product code: BZMF100GRECBJBH12

Pressed steel fixed castor with a 12mm bolt hole fitted with a grey electrically conductive tyre on a black polypropylene centred wheel with ball bearing. Wheel diameter 100mm, tread width 32mm, overall height 132mm, Load capacity 90kg. Conductive offers a resistance $R < 10 \Omega$



Diameter (mm)	100
Fixing Option	Bolt Hole
Castor Type	Fixed
Head Dia (mm)	22
Height (mm)	132
Bearing Type	Ball
Wheel Material	Electrically Conductive Rubber
Colour / Shore Hardness	Grey Electrically Conductive Rubber on Nylon Rim / 85 Shore A
Fork Thickness (mm)	2
Temperature Resistance	-15 °C TO +80 °C
To Suit Fixing Bolt (mm)	12
Tread (mm)	32
Load Capacity (kg)	90

BIL GROUP LTD

Porte Marsh Road, Calne, Wiltshire, SN11 9BW

Registered in England No: 2603821

VAT Reg: GB572705729

