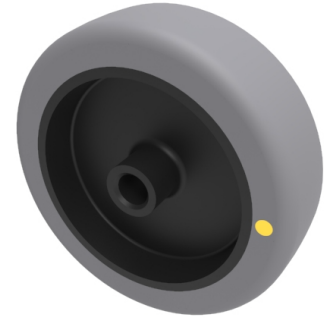


## Electrically Conductive Rubber 75mm Plain Bearing Wheel 60kg Load

**Product code: BZL75WGREC**



Grey electrical conductive rubber on polypropylene wheel with plain bore. Wheel diameter 75mm, tread width 24mm, Hub width 28mm, Bore size 8mm. Load capacity 60kg Conductive offers a resistance  $R < 10^{10} \Omega$

Wheel Material	Electrically Conductive Rubber
Diameter (mm)	75
Load Capacity (kg)	60
Bearing Type	Plain
Bore Size (mm)	8
Tread (mm)	24
Hub Width (mm)	28
Colour / Shore Hardness	Grey Electrically Conductive Rubber on Nylon Rim / 85 Shore A
Temperature Resistance	-30 °C TO +60 °C

### BIL GROUP LTD

Porte Marsh Road, Calne, Wiltshire, SN11 9BW

Registered in England No: 2603821

VAT Reg: GB572705729

