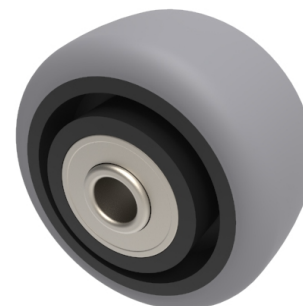


Electrically Conductive Rubber 50mm Ball Bearing Wheel 50kg Load

Product code: BZL50WGRECBJM8

Grey electrical conductive rubber on polypropylene wheel with ball bearing. Wheel diameter 50mm, tread width 24mm, Hub width 28mm, Bore size 8mm. Load capacity 50kg Conductive offers a resistance $R < 10^{10} \Omega$



Wheel Material	Electrically Conductive Rubber
Diameter (mm)	50
Load Capacity (kg)	50
Bearing Type	Ball
Bore Size (mm)	8
Tread (mm)	24
Hub Width (mm)	28
Colour / Shore Hardness	Grey Electrically Conductive Rubber on Nylon Rim / 85 Shore A
Temperature Resistance	-30 °C TO +60 °C

BIL GROUP LTD

Porte Marsh Road, Calne, Wiltshire, SN11 9BW

Registered in England No: 2603821

VAT Reg: GB572705729

