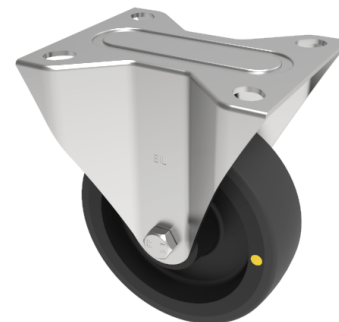


## Electrically Conductive Polyurethane Nylon Fixed Castor Plate 100mm 110kg

**Product code: SSMMF100PNBEC**

Grade 304 Pressed stainless steel fixed castor with a top plate fixing fitted with a black electrically conductive polyurethane on nylon wheel with roller bearing. Wheel diameter 100mm, tread width 30mm, overall height 128mm, top plate 105mm x 85mm, hole centres 80mm x 60mm. Load capacity 120kg Conductive offers a resistance  $R < 10000 \text{ Ohm}$ .



Diameter (mm)	100
Fixing Option	Plate
Castor Type	Fixed
Height (mm)	128
Wheel Material	Polyurethane on Nylon
Colour / Shore Hardness	Black Polyurethane on Nylon Rim / 97 Shore A
Bearing Type	Roller
Tread (mm)	30
Fork Thickness (mm)	2
To Suit Fixing Bolt (mm)	8
Load Capacity (kg)	120
Temperature Resistance	-20 °C TO +80 °C
Plate Size (mm)	105 X 85
Hole Centres (mm)	80 X 60
Top Plate Thickness (mm)	2

## BIL GROUP LTD

Porte Marsh Road, Calne, Wiltshire, SN11 9BW

Registered in England No: 2603821

VAT Reg: GB572705729

