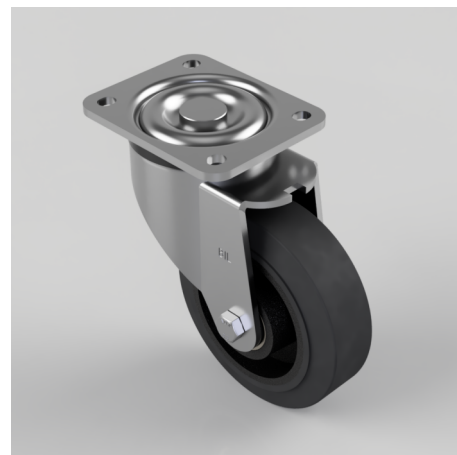


## Elastic Speed Rubber on Cast Iron Swivel Castor 150mm 400kg Load

**Product code: BZXP150CUBJ**

Pressed steel swivel castor with a top plate fixing fitted with a 65 shore A black high elastic rubber on cast iron wheel with ball bearings. Wheel diameter 150mm, tread width 50mm, overall height 200mm, top plate 135mm x 110mm, hole centres 105mm x 80/75mm; Load capacity 400kg at 4kph, 160kg at 10kph, 150kg at 16kph, 140kg at 20kph \*\* FOR INTERNAL TOWING USE ONLY \*\*



Diameter (mm)	150
Castor Type	Swivel
Fixing Option	Plate
Height (mm)	200
Wheel Material	Rubber on Cast Iron
Colour / Shore Hardness	Black Elastic Rubber on Cast Iron Rim / 65 Shore A
Temperature Resistance	-20 °C TO +60 °C
Bearing Type	Ball
Load Capacity (kg)	400
Tread (mm)	50
Swivel Radius (mm)	140
Plate Size (mm)	135 x 110
Hole Centres (mm)	105 x 75/80
Top Plate Thickness (mm)	6
Fork Thickness (mm)	5
To Suit Fixing Bolt (mm)	10

## BIL GROUP LTD

Porte Marsh Road, Calne, Wiltshire, SN11 9BW

Registered in England No: 2603821

VAT Reg: GB572705729

