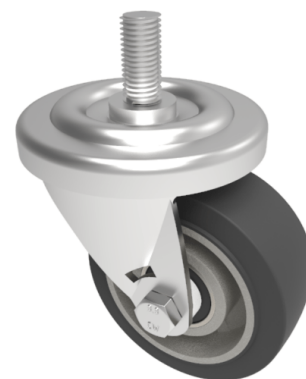


## Elastic Rubber Stem Swivel Castor 75mm 125kg Load

**Product code: BZH75ERBJM12X25**

Pressed steel swivel castor with a 12mm x 25mm threaded stem fitted with a 65 shore A black elastic rubber tyred wheel with a aluminium centre with ball bearings. Wheel diameter 75mm, Tread width 32mm, Overall Height 95mm, , Load Capacity 125kg. REACH compliant also PAH-Free rubber to confirm to EU-directive 2005/69/EC



Diameter (mm)	75
Castor Type	Swivel
Fixing Option	Stem
Height (mm)	95
Wheel Material	Rubber on Aluminium
Colour / Shore Hardness	Black Elastic Rubber on Aluminium Rim / 65 Shore A
Temperature Resistance	-30 °C TO +80 °C
Bearing Type	Ball
Load Capacity (kg)	125
Tread (mm)	32
Swivel Radius (mm)	60
Head Dia (mm)	76
To Suit Fixing Bolt (mm)	M12 X 25

## BIL GROUP LTD

Porte Marsh Road, Calne, Wiltshire, SN11 9BW

Registered in England No: 2603821

VAT Reg: GB572705729

