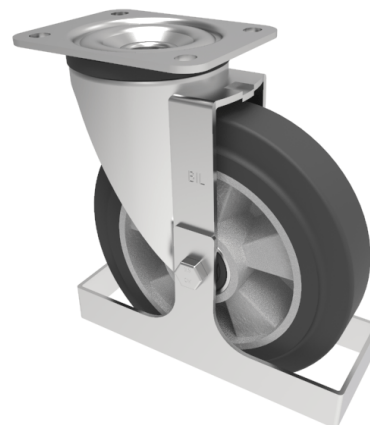


Elastic Rubber on Aluminium Plate Swivel Castor Footguard 150mm 350kg load

Product code: BZPH150ERBJFG

Pressed steel swivel castor with a top plate fixing fitted with a black high elastic natural 65 shore A rubber tyred wheel aluminium centre with ball bearings and footguard. Wheel diameter 150mm, tread width 50mm, overall height 190mm, top plate 135mm x 110mm, hole centres 105mm x 80/75mm. Load capacity 350kg. REACH compliant also PAH-Free rubber to confirm to EU-directive 2005/69/EC



Height (mm)	190
Tread (mm)	50
To Suit Fixing Bolt (mm)	10
Bearing Type	Ball
Diameter (mm)	150
Wheel Material	Rubber on Aluminium
Fixing Option	Plate
Castor Type	Swivel
Load Capacity (kg)	350
Colour / Shore Hardness	Black Elastic Rubber on Aluminium Rim / 65 Shore A
Swivel Radius (mm)	128
Plate Size (mm)	135 x 110
Hole Centres (mm)	105 x 80/75
Fork Thickness (mm)	4
Top Plate Thickness (mm)	4
Temperature Resistance	-30 °C TO +80 °C

BIL GROUP LTD

Porte Marsh Road, Calne, Wiltshire, SN11 9BW

Registered in England No: 2603821

VAT Reg: GB572705729

