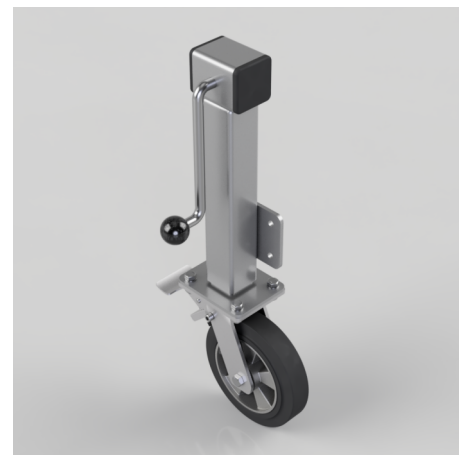


Elastic Rubber on Aluminium Plate Swivel Castor Brake Locking Castor 200mm 500kg Load

Product code: JAZHS200ERBJSWB

Side winding jacking unit fitted with a fabricated swivel castor with a 200mm black elastic rubber tyre aluminium centred wheel with ball bearings and total lock brake, wheel to carry a maximum load capacity of 500kg per complete unit. Please note Jacking castors are rated on a different principal to other castors. They lift the load off the floor and therefore each castor is liable to carry half the total load, also please note the maximum lift is 200mm but when jacked up to the height please beware of any obstacles as a sudden shock could result in the inner square tube bend around the outer tube. DO NOT OVERWIND Handle excessively more than what is needed as this will cause the pin in the gearbox to shear. (This is a safety precaution against over loading the unit)



Diameter (mm)	200
Castor Height (mm)	241
Castor Type	Swivel with Total Lock Brake
Swivel Radius (mm)	156
Fixing Option	Plate
Bearing Type	Ball
To Suit Fixing Bolt (mm)	10
Wheel Material	Rubber on Aluminium
Colour / Shore Hardness	Black Elastic Rubber on Aluminium Rim / 65 Shore A
Temperature Resistance	-30 °C TO +80 °C
Load Capacity (kg)	500
Tread (mm)	50
Height (mm)	648 / 848
Lifting Stroke (mm)	200
Handle Option	Fixed

BIL GROUP LTD

Porte Marsh Road, Calne, Wiltshire, SN11 9BW

Registered in England No: 2603821

VAT Reg: GB572705729

