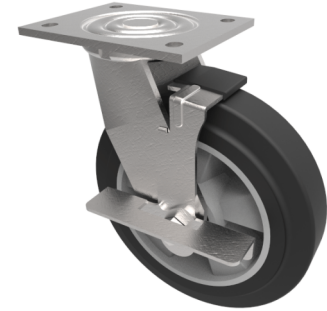


## Elastic Rubber on Aluminium Plate Swivel Castor Brake 200mm 500kg Load

**Product code: BZJ200ERBJBK**



Fabricated swivel castor with a top plate fixing fitted with a black high elastic natural 65 shore A rubber tyred aluminium centred wheel with ball bearings and a side fitting wheel brake. Wheel diameter 200mm, tread width 50mm, overall height 240mm, top plate 138mm x 110mm, hole centres 105mm x 80mm. Load capacity 500kg. REACH compliant also PAH-Free rubber to confirm to EU-directive 2005/69/EC

Diameter (mm)	200
Fixing Option	Plate
Castor Type	Swivel with Wheel Brake
Bearing Type	Ball
Height (mm)	240
Plate Size (mm)	135 x 110
Hole Centres (mm)	105 x 80
To Suit Fixing Bolt (mm)	10
Wheel Material	Rubber on Aluminium
Colour / Shore Hardness	Black Elastic Rubber on Aluminium Rim / 65 Shore A
Temperature Resistance	-30 °C TO +80 °C
Top Plate Thickness (mm)	5.5
Fork Thickness (mm)	5.5
Swivel Radius (mm)	154
Load Capacity (kg)	200
Tread (mm)	50