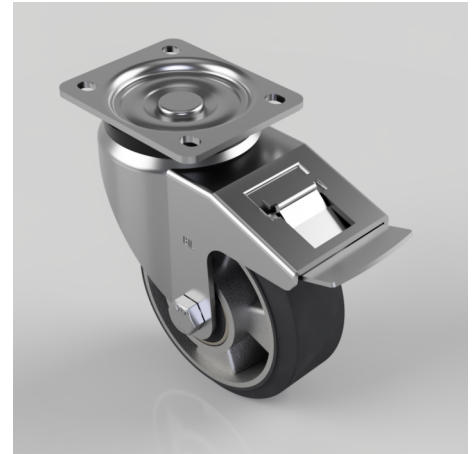


Elastic Rubber on Aluminium Plate Swivel Castor Brake 125mm 270kg Load

Product code: BZWH125ERBJSWB

Pressed steel swivel castor with a top plate fixing with a black high elastic natural 65 shore A rubber tyred wheel with a aluminium centre with ball bearings and total lock brake. Wheel diameter 125mm, tread width 50mm, overall height 166mm, top plate 105mm x 86mm, hole centres 80mm x 60mm. Load capacity 270kg. REACH compliant also PAH-Free rubber to confirm to EU-directive 2005/69/EC



Diameter (mm)	125
Castor Type	Swivel with Total Lock Brake
Fixing Option	Plate
Height (mm)	166
Wheel Material	Rubber on Aluminium
Colour / Shore Hardness	Black Elastic Rubber on Aluminium Rim / 65 Shore A
Temperature Resistance	-30 °C TO +80 °C
Bearing Type	Ball
Load Capacity (kg)	270
Tread (mm)	50
Swivel Radius (mm)	138
Plate Size (mm)	105 x 86
Hole Centres (mm)	80 X 60
Top Plate Thickness (mm)	4
Fork Thickness (mm)	3.5
To Suit Fixing Bolt (mm)	10

BIL GROUP LTD

Porte Marsh Road, Calne, Wiltshire, SN11 9BW

Registered in England No: 2603821

VAT Reg: GB572705729

