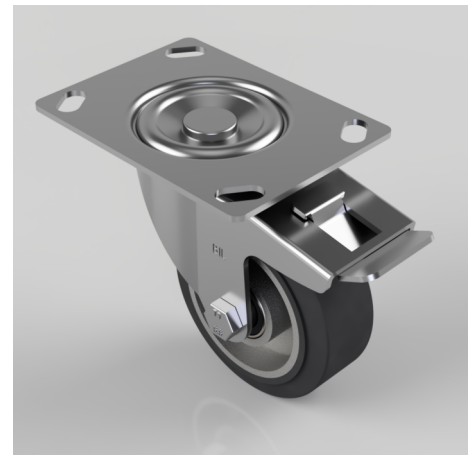


Elastic Rubber on Aluminium Plate Swivel Castor Brake 100mm 200kg Load

Product code: BZEH100ERBJSWBLP

Pressed steel swivel castor with a top plate fixing fitted with a black 65 shore A elastic rubber tyre on a black nylon centre with a ball bearing and total lock brake. Wheel diameter 100mm, tread width 40mm, overall height 128mm, top plate 135mm x 100mm, hole centres 105mm x 80mm or 116mm x 63.5mm Load capacity 200kg. REACH compliant also PAH-Free rubber to confirm to EU-directive 2005/69/EC



| | |
|--------------------------|--|
| Diameter (mm) | 100 |
| Castor Type | Swivel with Total Lock Brake |
| Fixing Option | Plate |
| Height (mm) | 128 |
| Wheel Material | Rubber on Aluminium |
| Colour / Shore Hardness | Black Elastic Rubber on Aluminium Rim / 65 Shore A |
| Temperature Resistance | -30 °C TO +80 °C |
| Bearing Type | Ball |
| Load Capacity (kg) | 200 |
| Tread (mm) | 40 |
| Swivel Radius (mm) | 115 |
| Plate Size (mm) | 135 x 110 |
| Hole Centres (mm) | 105/116 x 80/64 |
| Top Plate Thickness (mm) | 3 |
| Fork Thickness (mm) | 3 |
| To Suit Fixing Bolt (mm) | 10 |

BIL GROUP LTD

Porte Marsh Road, Calne, Wiltshire, SN11 9BW

Registered in England No: 2603821

VAT Reg: GB572705729

