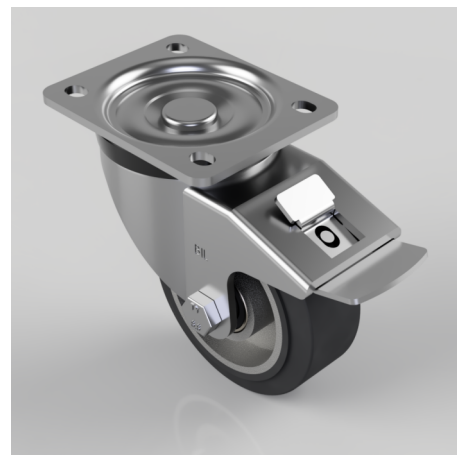


Elastic Rubber on Aluminium Plate Swivel Castor Brake 100mm 200kg Load

Product code: BZH100ERBJSWB

Pressed steel swivel castor with a top plate fixing fitted with a black high elastic natural 65 shore A rubber tyred aluminium centred wheel with ball bearings and total lock brake, Wheel diameter 100mm, tread width 40mm, overall height 128mm, top plate 105mm x 86mm, hole centres 80mm x 60mm. Load capacity 200kg. REACH compliant also PAH-Free rubber to confirm to EU-directive 2005/69/EC



Diameter (mm)	100
Castor Type	Swivel with Total Lock Brake
Fixing Option	Plate
Height (mm)	128
Wheel Material	Rubber on Aluminium
Colour / Shore Hardness	Black Elastic Rubber on Aluminium Rim / 65 Shore A
Temperature Resistance	-30 °C TO +80 °C
Bearing Type	Ball
Load Capacity (kg)	200
Tread (mm)	40
Swivel Radius (mm)	120
Plate Size (mm)	105 x 86
Hole Centres (mm)	80 X 60
Top Plate Thickness (mm)	4
Fork Thickness (mm)	4
To Suit Fixing Bolt (mm)	8

BIL GROUP LTD

Porte Marsh Road, Calne, Wiltshire, SN11 9BW

Registered in England No: 2603821

VAT Reg: GB572705729

