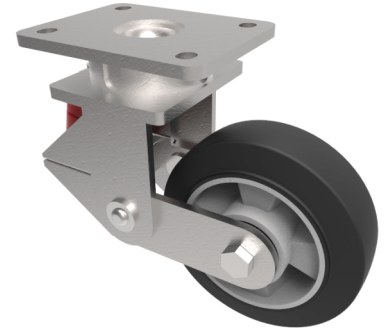


Elastic Rubber on Aluminium Plate Swivel Castor 150mm 350kg Load

Product code: BZKL150ERBJSPR



Fabricated swivel castor with top plate fixing fitted with a 150mm x 50mm black high elastic natural 65 shore A rubber tyre aluminium centred wheel with ball bearings overall height 183mm/203mm, plate size 138mm x 110mm, hole centres 105mm x 80mm. fitted with a 600kg red polyurethane spring but load capacity is 350kg at 4kph and 170kg at 10kph. REACH compliant also PAH-Free rubber to confirm to EU-directive 2005/69/EC

| | |
|--------------------------|--|
| Diameter (mm) | 150 |
| Fixing Option | Plate |
| Castor Type | Swivel |
| Bearing Type | Ball |
| Plate Size (mm) | 138 x 110 |
| Hole Centres (mm) | 105 x 80 |
| To Suit Fixing Bolt (mm) | 10 |
| Wheel Material | Rubber on Aluminium |
| Colour / Shore Hardness | Black Elastic Rubber on Aluminium Rim / 65 Shore A |
| Temperature Resistance | -30 °C TO +80 °C |
| Top Plate Thickness (mm) | 7.5 |
| Fork Thickness (mm) | 6 |
| Swivel Radius (mm) | 137 |
| Load Capacity (kg) | 350 |
| Height Un-Laden (mm) | 203 |
| Height Fully Laden (mm) | 183 |

BIL GROUP LTD

Porte Marsh Road, Calne, Wiltshire, SN11 9BW

Registered in England No: 2603821

VAT Reg: GB572705729

