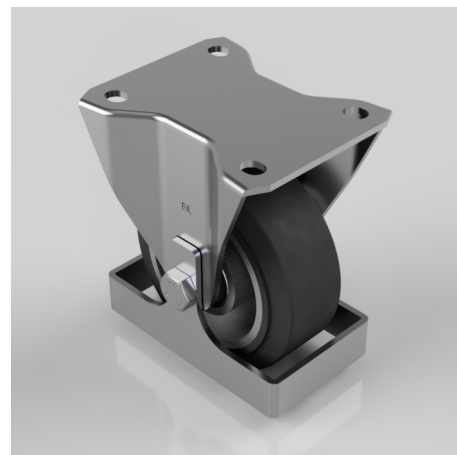


## Elastic Rubber on Aluminium Plate Fixed Castor Footguard 100mm 200kg load

**Product code: BZHF100ERBJFG**

Pressed steel fixed castor with a top plate fixing fitted with a black high elastic natural 65 shore A rubber aluminium centred wheel with ball bearings and footguard Wheel diameter 100mm, tread width 40mm, overall height 128mm, top plate 105mm x 86mm, hole centres 80mm x 60mm. Load capacity 200kg. REACH compliant also PAH-Free rubber to confirm to EU-directive 2005/69/EC



Height (mm)	128
Tread (mm)	40
To Suit Fixing Bolt (mm)	8
Bearing Type	Ball
Diameter (mm)	100
Wheel Material	Rubber on Aluminium
Fixing Option	Plate
Castor Type	Fixed
Load Capacity (kg)	200
Colour / Shore Hardness	Black Elastic Rubber on Aluminium Rim / 65 Shore A
Plate Size (mm)	105 x 86
Hole Centres (mm)	80 X 60
Fork Thickness (mm)	3
Top Plate Thickness (mm)	3
Temperature Resistance	-30 °C TO +80 °C

## BIL GROUP LTD

Porte Marsh Road, Calne, Wiltshire, SN11 9BW

Registered in England No: 2603821

VAT Reg: GB572705729

