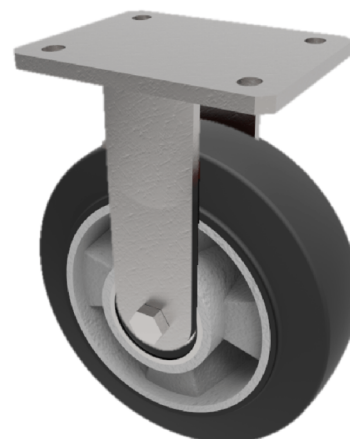


Elastic Rubber on Aluminium Plate Fixed Castor 250mm 650kg Load

Product code: BZKF250ERBJ

Fabricated fixed castor with a top plate fixing fitted with a black high elastic natural 65 shore A rubber on a aluminium centred wheel with ball bearings. Wheel diameter 250mm, tread width 50mm, overall height 300mm, top plate 150mm x 110mm, hole centres 105mm x 80mm or 121mm x 59mm. Load capacity 650kgs at 4kph, 260kg at 10kph. REACH compliant also PAH-Free rubber to confirm to EU-directive 2005/69/EC ** FOR INTERNAL AND EXTERNAL TOWING USE **



Diameter (mm)	250
Fixing Option	Plate
Castor Type	Fixed
Bearing Type	Ball
Height (mm)	300
Plate Size (mm)	150 x 110
Hole Centres (mm)	105/121 x 80/59
To Suit Fixing Bolt (mm)	12
Wheel Material	Rubber on Aluminium
Colour / Shore Hardness	Black Elastic Rubber on Aluminium Rim / 65 Shore A
Temperature Resistance	-30 °C TO +80 °C
Top Plate Thickness (mm)	7.5
Fork Thickness (mm)	6
Load Capacity (kg)	650
Tread (mm)	50

BIL GROUP LTD

Porte Marsh Road, Calne, Wiltshire, SN11 9BW

Registered in England No: 2603821

VAT Reg: GB572705729

