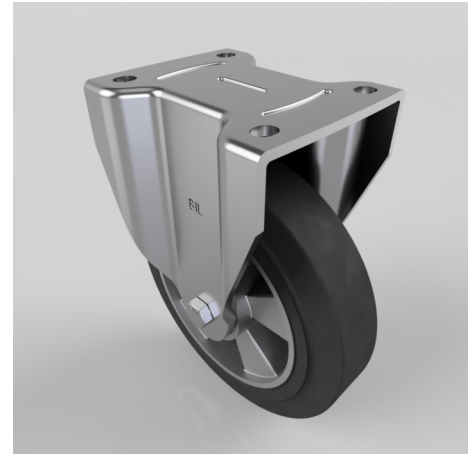


Elastic Rubber on Aluminium Plate Fixed Castor 200mm 500kg Load

Product code: BZXP200ERBJ

Pressed steel fixed castor with a top plate fixing fitted with a black high elastic 65 shore A rubber tyre wheel aluminium centre with ball bearings. Wheel diameter 200mm, tread width 50mm, overall height 245mm, top plate 135mm x 110mm, hole centres 105mm x 80/75mm. Load capacity 500kg at 4kph and 200kg at 10kph. REACH compliant also PAH-Free rubber to confirm to EU-directive 2005/69/EC ** INTERNAL USE ONLY**



Diameter (mm)	200
Castor Type	Fixed
Fixing Option	Plate
Height (mm)	245
Wheel Material	Rubber on Aluminium
Colour / Shore Hardness	Black Elastic Rubber on Aluminium Rim / 65 Shore A
Temperature Resistance	-30 °C TO +80 °C
Bearing Type	Ball
Load Capacity (kg)	500
Tread (mm)	50
Plate Size (mm)	135 x 110
Hole Centres (mm)	105 x 75/80
Top Plate Thickness (mm)	6
Fork Thickness (mm)	5
To Suit Fixing Bolt (mm)	10

BIL GROUP LTD

Porte Marsh Road, Calne, Wiltshire, SN11 9BW

Registered in England No: 2603821

VAT Reg: GB572705729

