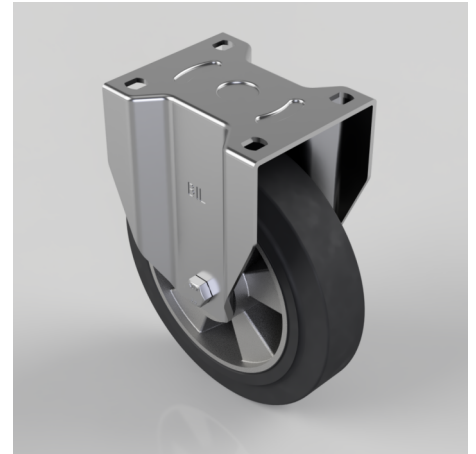


Elastic Rubber on Aluminium Plate Fixed Castor 200mm 500kg Load

Product code: BZPF200ERBJ

Pressed steel fixed castor with a flat plat fixing fitted with a black high elastic natural 65 shore A rubber tyre on aluminium centre wheel with a ball bearing. Wheel diameter 200mm, tread width 50mm, overall height 239mm, plate size 135mm x 110mm, hole centres 105mm x 80/75mm. Load capacity 500kg. REACH compliant also PAH-Free rubber to confirm to EU-directive 2005/69/EC



Diameter (mm)	200
Castor Type	Fixed
Fixing Option	Plate
Height (mm)	239
Wheel Material	Rubber on Aluminium
Colour / Shore Hardness	Black Elastic Rubber on Aluminium Rim / 65 Shore A
Temperature Resistance	-30 °C TO +80 °C
Bearing Type	Ball
Load Capacity (kg)	500
Tread (mm)	50
Plate Size (mm)	135 x 110
Hole Centres (mm)	105 x 80/75
Top Plate Thickness (mm)	3.5
Fork Thickness (mm)	3.5
To Suit Fixing Bolt (mm)	12

BIL GROUP LTD

Porte Marsh Road, Calne, Wiltshire, SN11 9BW

Registered in England No: 2603821

VAT Reg: GB572705729

