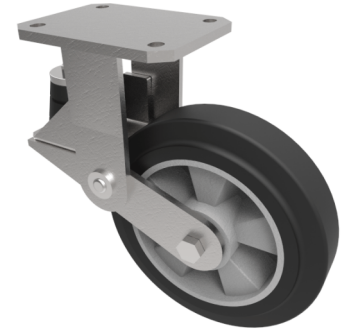


## Elastic Rubber on Aluminium Plate Fixed Castor 200mm 200kg Load

**Product code: BZKFL200ERBJSPR200**



Fabricated fixed castor with top plate fixing fitted with a 200mm x 50mm black high elastic natural 65 shore A rubber tyred aluminium centred wheel with ball bearings overall height 237mm/257mm, plate size 138mm x 110mm, hole centres 105mm x 80mm. fitted with a 200kg black rubber spring but load capacity is 200kg at 4kph and 180kg at 10kph. REACH compliant also PAH-Free rubber to confirm to EU-directive 2005/69/EC. (Catalogue SKU BZKFL200ERBJSPR200)

Diameter (mm)	200
Fixing Option	Plate
Castor Type	Fixed
Bearing Type	Ball
Plate Size (mm)	138 x 110
Hole Centres (mm)	105 x 80/75
To Suit Fixing Bolt (mm)	10
Wheel Material	Rubber on Aluminium
Colour / Shore Hardness	Black Elastic Rubber on Aluminium Rim / 65 Shore A
Temperature Resistance	-30 °C TO +80 °C
Top Plate Thickness (mm)	7.5
Fork Thickness (mm)	6
Load Capacity (kg)	200
Height Un-Laden (mm)	257
Height Fully Laden (mm)	237

### BIL GROUP LTD

Porte Marsh Road, Calne, Wiltshire, SN11 9BW

Registered in England No: 2603821

VAT Reg: GB572705729

