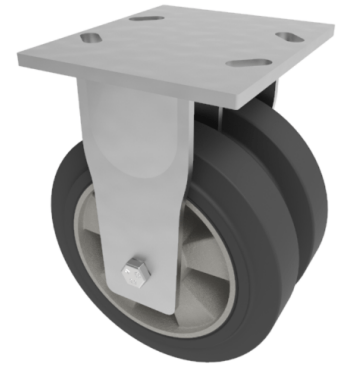


## Elastic Rubber on Aluminium Plate Fixed Castor 200mm 1000kg Load

**Product code: 2BZKF200ERBJ**

Fabricated swivel castor with a top plate fixing fitted with 2 x black high elastic natural 65 shore A rubber tyre on aluminium centred wheels with ball bearings. Wheel diameter 200mm, tread width 50mm x 2, overall height 250mm, plate size 175mm x 150mm, hole centres 105mm x 80mm or 121mm x 59mm. Load capacity 1000kg. REACH compliant also PAH-Free rubber to confirm to EU-directive 2005/69/EC



Diameter (mm)	200
Fixing Option	Plate
Castor Type	Fixed
Bearing Type	Ball
Plate Size (mm)	175 x 150
Hole Centres (mm)	105/121 x 80/59
Height (mm)	250
To Suit Fixing Bolt (mm)	12
Wheel Material	Rubber on Aluminium
Colour / Shore Hardness	Black Elastic Rubber on Aluminium Rim / 65 Shore A
Temperature Resistance	&quot;-30 °C TO +80 °C
Tread (mm)	2 x 50
Load Capacity (kg)	1000
Top Plate Thickness (mm)	7.5
Fork Thickness (mm)	6

## BIL GROUP LTD

Porte Marsh Road, Calne, Wiltshire, SN11 9BW

Registered in England No: 2603821

VAT Reg: GB572705729

