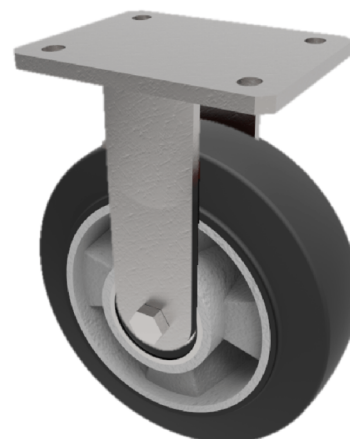


Elastic Rubber on Aluminium Plate Fixed Castor 160mm 400kg Load

Product code: BZMJF160ERBJ

Fabricated white zinc ROHS plated fixed castor with top plate fixing fitted with a black high elastic natural 65 shore A rubber tyred wheel on aluminium centre with ball bearing. Wheel diameter 160mm, tread width 50mm, overall height 195mm, plate size 138mm x 110mm, hole centres 105mm x 80mm/75mm. Load capacity 400kg and 160kg at 4kph REACH compliant also PAH-Free rubber to confirm to EU-directive 2005/69/EC ** FOR INTERNAL TOWING USE ONLY **



Diameter (mm)	160
Fixing Option	Plate
Castor Type	Fixed
Bearing Type	Ball
Height (mm)	195
Plate Size (mm)	138 x 110
Hole Centres (mm)	105 x 80/75
To Suit Fixing Bolt (mm)	10
Wheel Material	Rubber on Aluminium
Colour / Shore Hardness	Black Elastic Rubber on Aluminium Rim / 65 Shore A
Temperature Resistance	-30 °C TO +80 °C
Top Plate Thickness (mm)	7
Fork Thickness (mm)	6
Load Capacity (kg)	400
Tread (mm)	50

BIL GROUP LTD

Porte Marsh Road, Calne, Wiltshire, SN11 9BW

Registered in England No: 2603821

VAT Reg: GB572705729

