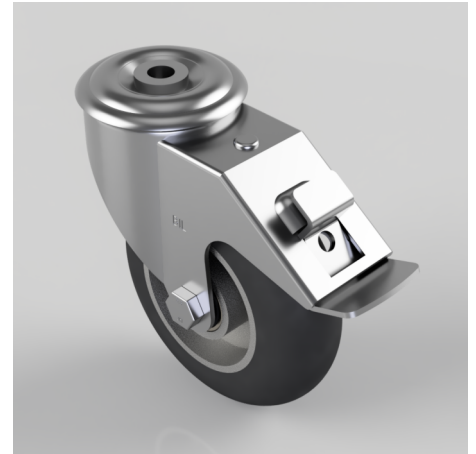


## Elastic Rubber on Aluminium Plate Bolt Hole Swivel Castor Brake 125mm 250kg Load

**Product code: BZMM125SRERBJBH12SWB**

Pressed steel swivel castor with a 12mm bolt hole with a black ergonomic black high elastic natural 55 shore A round profile rubber tyre wheel with an aluminium centre with ball bearings and total lock brake. Wheel diameter 125mm, tread width 40mm, overall height 155mm, Load capacity 200kg. REACH compliant also PAH-Free rubber to confirm to EU-directive 2005/69/EC, also available with flat tread details on request



Diameter (mm)	125
Castor Type	Swivel with Total Lock Brake
Fixing Option	Bolt Hole
Height (mm)	155
Wheel Material	Rubber on Aluminium
Colour / Shore Hardness	Black Ergonomic Rubber on Aluminium Rim / 55 Shore A
Temperature Resistance	-30 °C TO +80 °C
Bearing Type	Ball
Load Capacity (kg)	200
Tread (mm)	40
Swivel Radius (mm)	134
Head Dia (mm)	76
Fork Thickness (mm)	2.5
To Suit Fixing Bolt (mm)	12

## BIL GROUP LTD

Porte Marsh Road, Calne, Wiltshire, SN11 9BW

Registered in England No: 2603821

VAT Reg: GB572705729

