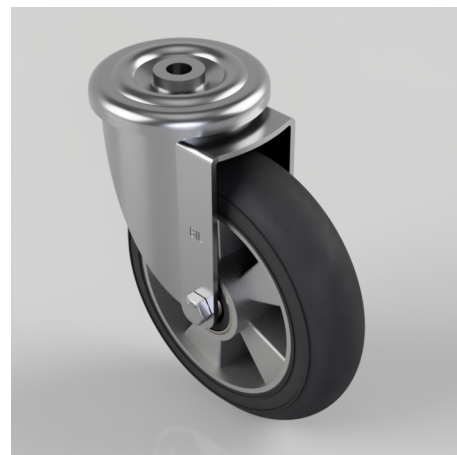


## Elastic Rubber on Aluminium Bolt Hole Swivel Castor 200mm 380kg Load

**Product code: BZMM200SRERBJBH16**

Pressed steel swivel castor with a 16mm bolt hole fitted with an ergonomic black high elastic natural 55 shore A round profile rubber tyre aluminium centred wheel with ball bearings. Wheel diameter 200mm, tread width 50mm, overall height 238mm, Load capacity 380kg. REACH compliant also PAH-Free rubber to confirm to EU-directive 2005/69/EC, also available with flat tread details on request



Diameter (mm)	200
Castor Type	Swivel
Fixing Option	Bolt Hole
Height (mm)	238
Wheel Material	Rubber on Aluminium
Colour / Shore Hardness	Black Ergonomic Rubber on Aluminium Rim / 55 Shore A
Temperature Resistance	-30 °C TO +80 °C
Bearing Type	Ball
Load Capacity (kg)	380
Tread (mm)	50
Swivel Radius (mm)	153
Head Dia (mm)	114
Fork Thickness (mm)	4
To Suit Fixing Bolt (mm)	16

## BIL GROUP LTD

Porte Marsh Road, Calne, Wiltshire, SN11 9BW

Registered in England No: 2603821

VAT Reg: GB572705729

