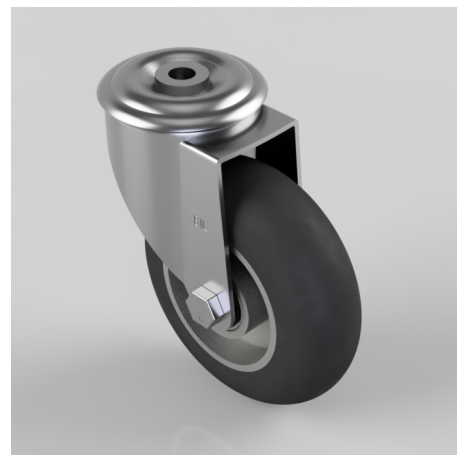


Elastic Rubber on Aluminium Bolt Hole Swivel Castor 125mm 200kg Load

Product code: BZMM125SRERBJBH12

Pressed steel swivel castor with a 12mm bolt hole fixing with a black ergonomic black high elastic natural 55 shore A round profile rubber tyre wheel with an aluminium centre with ball bearings. Wheel diameter 125mm, tread width 40mm, overall height 155mm, Load capacity 200kg. REACH compliant also PAH-Free rubber to confirm to EU-directive 2005/69/EC, also available with flat tread details on request



Diameter (mm)	125
Castor Type	Swivel
Fixing Option	Bolt Hole
Height (mm)	155
Wheel Material	Rubber on Aluminium
Colour / Shore Hardness	Black Ergonomic Rubber on Aluminium Rim / 55 Shore A
Temperature Resistance	-30 °C TO +80 °C
Bearing Type	Ball
Load Capacity (kg)	200
Tread (mm)	40
Swivel Radius (mm)	104
Head Dia (mm)	76
Fork Thickness (mm)	2.5
To Suit Fixing Bolt (mm)	12

BIL GROUP LTD

Porte Marsh Road, Calne, Wiltshire, SN11 9BW

Registered in England No: 2603821

VAT Reg: GB572705729

