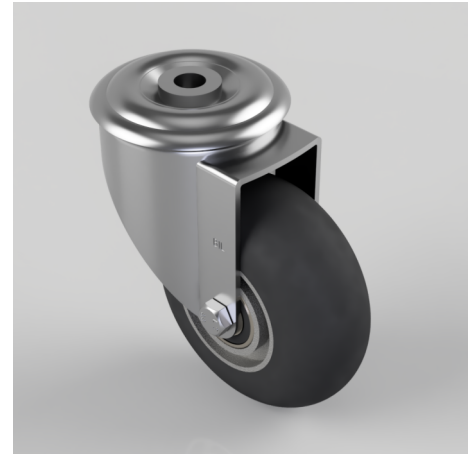


## Elastic Rubber on Aluminium Bolt Hole Swivel Castor 100mm 200kg Load

**Product code: BZMM100SRERBJBH12**

Pressed steel swivel castor with 12mm bolt hole fitted with a black ergonomic round profile high elastic natural 55 shore A rubber tyred aluminium centred wheel with ball bearings. Wheel diameter 100mm, tread width 40mm, overall height 128mm, Load capacity 200kg. REACH compliant also PAH-Free rubber to confirm to EU-directive 2005/69/EC



Diameter (mm)	100
Castor Type	Swivel
Fixing Option	Bolt Hole
Height (mm)	128
Wheel Material	Rubber on Aluminium
Colour / Shore Hardness	Black Ergonomic Rubber on Aluminium Rim / 55 Shore A
Temperature Resistance	-30 °C TO +80 °C
Bearing Type	Ball
Load Capacity (kg)	200
Tread (mm)	40
Swivel Radius (mm)	88
Head Dia (mm)	76
Fork Thickness (mm)	2.5
To Suit Fixing Bolt (mm)	12

## BIL GROUP LTD

Porte Marsh Road, Calne, Wiltshire, SN11 9BW

Registered in England No: 2603821

VAT Reg: GB572705729

