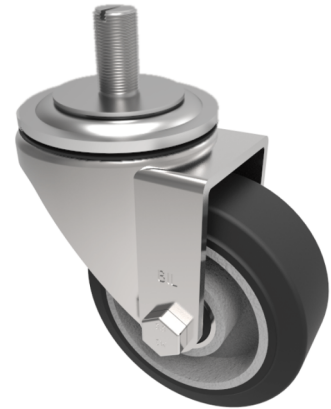


Elastic Rubber on Aluminium 65Shore A Stem Swivel Castor 100mm 200kg Load

Product code: BZH100ERBJST

Pressed steel swivel castor with a 12mm bolt hole fitted with a black high elastic natural 65 shore A rubber tyred aluminium centred wheel with ball bearings and fitted with a 16mm x 30mm threaded stem Wheel diameter 100mm, tread width 40mm, overall height 128mm. Load capacity 200kg REACH compliant also PAH-Free rubber to confirm to EU-directive 2005/69/EC



Diameter (mm)	100
Castor Type	Swivel
Fixing Option	Stem
Height (mm)	128
Wheel Material	Rubber on Aluminium
Colour / Shore Hardness	Black Elastic Rubber on Aluminium Rim / 65 Shore A
Temperature Resistance	-30 °C TO +80 °C
Bearing Type	Ball
Load Capacity (kg)	200
Tread (mm)	40
Swivel Radius (mm)	90
Head Dia (mm)	76
To Suit Fixing Bolt (mm)	M16 X 30

BIL GROUP LTD

Porte Marsh Road, Calne, Wiltshire, SN11 9BW

Registered in England No: 2603821

VAT Reg: GB572705729

