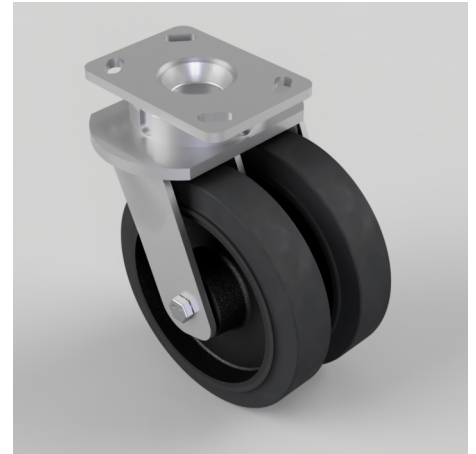


Elastic Rubber Cast Iron Plate Swivel Castor 200mm 1000kg Load

Product code: 2BZK200CUBJ

Twin wheeled swivel castor with a top plate fixing fitted with 2 65 shore A black elastic rubber cast iron centred wheels with ball bearings. Wheel diameter 2 x 200mm, tread width 2 x 50mm, overall height 250mm, top plate 150mm x 110mm, hole centres 105mm x 80mm or 121mm x 59mm. Load capacity 1000kg. - At 6 kph speed, the load of each wheel is advised to be 80% of the load at 4kph - At 10 kph speed, the load of each wheel is advised to be 55% of the load at 4 kph. - At 16 kph speed, the load of each wheel is advised to be 45% of the load at 4kph. - At 20 kph speed, the load of each wheel is advised to be 35% of the load at 4 kph. - No data for elastic rubber wheel over 20 kph.



Diameter (mm)	200
Fixing Option	Plate
Castor Type	Swivel
Bearing Type	Ball
Plate Size (mm)	150 x 110
Hole Centres (mm)	105/121 x 80/59
Height (mm)	250
Swivel Radius (mm)	170
To Suit Fixing Bolt (mm)	12
Wheel Material	Rubber on Cast Iron
Colour / Shore Hardness	Black Elastic Rubber on Cast Iron Rim / 65 Shore A
Temperature Resistance	"-20 °C TO +60 °C
Tread (mm)	2 x 50
Load Capacity (kg)	1000
Top Plate Thickness (mm)	7.5
Fork Thickness (mm)	6

BIL GROUP LTD

Porte Marsh Road, Calne, Wiltshire, SN11 9BW

Registered in England No: 2603821

VAT Reg: GB572705729

