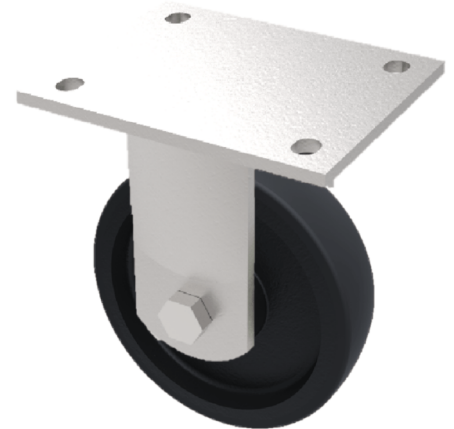


Elastic Rubber Cast Iron Plate Fixed Castor 200mm 600kg Load

Product code: BZQF200CRBJ/60

Fabricated fixed castor with a top plate fixing fitted with a black elastic rubber tyred wheel on a cast iron centre with ball bearings. Wheel diameter 200mm, tread width 60mm, overall height 264mm, top plate 175mm x 140mm, hole centres 140mm x 105mm load capacity 600kg.



Diameter (mm)	200
Fixing Option	Plate
Castor Type	Fixed
Bearing Type	Ball
Height (mm)	264
Plate Size (mm)	175 X 140
Hole Centres (mm)	140 X 105
To Suit Fixing Bolt (mm)	14
Wheel Material	Rubber on Cast Iron
Colour / Shore Hardness	Black Elastic Rubber on Cast Iron Rim / 75 Shore A
Temperature Resistance	-20 °C TO +60 °C
Top Plate Thickness (mm)	12
Fork Thickness (mm)	10
Load Capacity (kg)	600
Tread (mm)	60

BIL GROUP LTD

Porte Marsh Road, Calne, Wiltshire, SN11 9BW

Registered in England No: 2603821

VAT Reg: GB572705729

