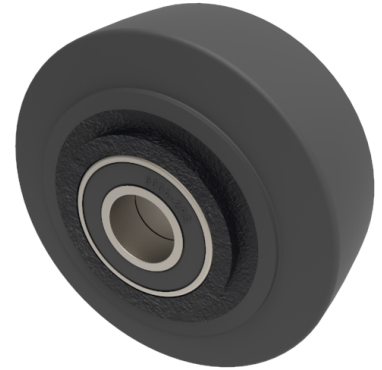


Elastic Rubber Cast Iron 100mm Ball Bearing Wheel 160kg Load

Product code: BZMH100WCRBJM20



Black elastic rubber tyre on cast iron centred wheel with a ball bearing. Diameter 100mm, tread width 38mm, bore size 20mm, hub length 45mm. Load capacity 160kg.

Wheel Material	Rubber on Cast Iron
Diameter (mm)	100
Load Capacity (kg)	160
Bearing Type	Ball
Bore Size (mm)	20
Tread (mm)	38
Hub Width (mm)	45
Colour / Shore Hardness	Black Elastic Rubber on Cast Iron Rim / 75 Shore A
Temperature Resistance	-20 °C TO +60 °C

BIL GROUP LTD

Porte Marsh Road, Calne, Wiltshire, SN11 9BW

Registered in England No: 2603821

VAT Reg: GB572705729

