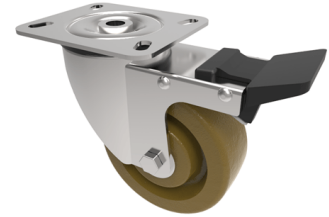


Ditherm Plate Swivel Castor Brake 100mm 150kg Load

Product code: SSMH100ANHTSWB

Grade 304 Stainless steel swivel castor with a top plate fixing fitted with a high temperature brown phenolic wheel with a plain bearing and total lock brake. Wheel diameter 100mm, tread width 38mm, overall height 133mm, top plate 100mm x 85mm, hole centres 80mm x 60mm or 75mm x 45mm load capacity 150kg at a maximum temperature of 250c



Diameter (mm)	100
Fixing Option	Plate
Castor Type	Swivel with Total Lock Brake
Plate Size (mm)	100 x 85
Hole Centres (mm)	80/75 x 60/45
To Suit Fixing Bolt (mm)	8
Height (mm)	128
Bearing Type	Plain
Swivel Radius (mm)	125
Wheel Material	Ditherm
Colour / Shore Hardness	Brown High Temperature Phenolic
Temperature Resistance	-30 °C to +250 °C
Load Capacity (kg)	150
Tread (mm)	38
Top Plate Thickness (mm)	2.5
Fork Thickness (mm)	2.5

BIL GROUP LTD

Porte Marsh Road, Calne, Wiltshire, SN11 9BW

Registered in England No: 2603821

VAT Reg: GB572705729

