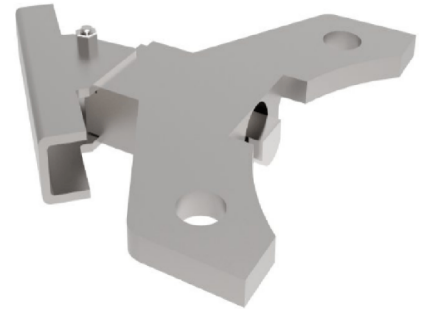


## Directional lock for the 2BZQDL series

**Product code: 2BZQDL/NEW**

Directional lock for the 2BZQ series BIL recommend that the lock and the castor are attached to the equipment but before you tighten the nuts totally engage the lock and hammer the lock forward so it totally engages and then tighten the nuts.



## BIL GROUP LTD

Porte Marsh Road, Calne, Wiltshire, SN11 9BW

Registered in England No: 2603821

VAT Reg: GB572705729

