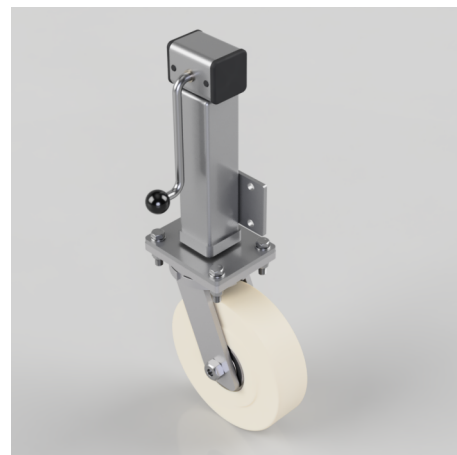


Cast Nylon Plate Swivel Castor 250mm 3000kg Load

Product code: JAZHD300NYBJ

Side plate fixing fabricated zinc plated jacking unit fitted with a 300mm swivel castor with a cast nylon ball bearing wheel, Tread width 80mm plate size 200mm x 110mm, hole centres 135mm x 80mm, height 792mm/942mm, maximum lift is 150mm. Load capacity 3000kg. Please note Jacking castors are rated on a different principal to other castors and we recommend the total lifted load is divided over just 2 jacking units. for other dimensions please refer to the BIL catalogue or request a drawing. When jacked up to the height please beware of any obstacles as a sudden shock could result in the inner square tube bending around the outer tube. DO NOT OVERWIND Handle excessively more than what is needed as this will cause the pin in the gearbox to shear. (This is a safety precaution against over loading the unit) (Catalogue SKU JAZHD300NYBJHD)



| | |
|--------------------------|------------------|
| Diameter (mm) | 300 |
| Castor Height (mm) | 375 |
| Castor Type | Swivel |
| Swivel Radius (mm) | 224 |
| Fixing Option | Plate |
| Bearing Type | Ball |
| To Suit Fixing Bolt (mm) | 16 |
| Wheel Material | Nylon |
| Colour / Shore Hardness | White Nylon |
| Temperature Resistance | -30 °C TO +80 °C |
| Load Capacity (kg) | 3000 |
| Tread (mm) | 80 |
| Height (mm) | 792 / 942 |
| Lifting Stroke (mm) | 150 |
| Handle Option | Fixed |

BIL GROUP LTD

Porte Marsh Road, Calne, Wiltshire, SN11 9BW

Registered in England No: 2603821

VAT Reg: GB572705729

