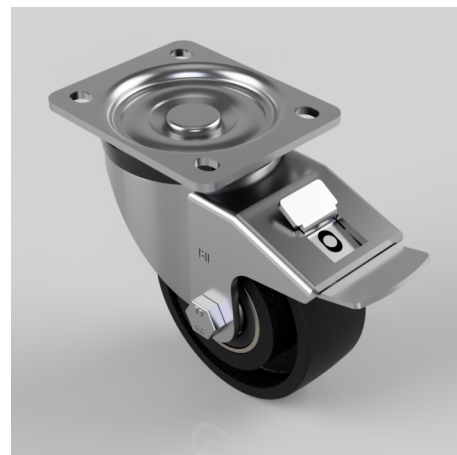


## Cast Iron Plate Swivel Castor Brake 100mm 350kg Load

**Product code: BZH100CIBJSWB**

Pressed steel swivel castor with a top plate fixing fitted with a black cast iron wheel with ball bearings with a total lock brake. Wheel diameter 100mm, tread width 38mm, overall height 128mm, top plate 105mm x 86mm, hole centres 80mm x 60mm. Load capacity 350kg.



|                          |                              |
|--------------------------|------------------------------|
| Diameter (mm)            | 100                          |
| Castor Type              | Swivel with Total Lock Brake |
| Fixing Option            | Plate                        |
| Height (mm)              | 128                          |
| Wheel Material           | Cast Iron                    |
| Colour / Shore Hardness  | Black Painted Cast Iron      |
| Temperature Resistance   | -30 °C TO +80 °C             |
| Bearing Type             | Ball                         |
| Load Capacity (kg)       | 350                          |
| Tread (mm)               | 38                           |
| Swivel Radius (mm)       | 120                          |
| Plate Size (mm)          | 105 x 86                     |
| Hole Centres (mm)        | 80 X 60                      |
| Top Plate Thickness (mm) | 4                            |
| Fork Thickness (mm)      | 4                            |
| To Suit Fixing Bolt (mm) | 8                            |

## BIL GROUP LTD

Porte Marsh Road, Calne, Wiltshire, SN11 9BW

Registered in England No: 2603821

VAT Reg: GB572705729

