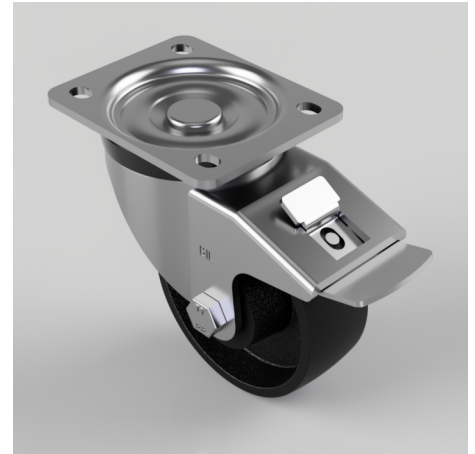


Cast Iron Plate Swivel Castor Brake 100mm 350kg Load

Product code: BZH100CISWB

Pressed steel swivel castor with a top plate fixing fitted with a cast iron wheel with a plain bore and total lock brake. Wheel diameter 100mm, tread width 38mm, overall height 128mm, top plate 105mm x 85mm, hole centres 80mm x 60mm. Load capacity 350kg.



Diameter (mm)	100
Castor Type	Swivel with Total Lock Brake
Fixing Option	Plate
Height (mm)	128
Wheel Material	Cast Iron
Colour / Shore Hardness	Black Painted Cast Iron
Temperature Resistance	-30 °C TO +80 °C
Bearing Type	Plain
Load Capacity (kg)	350
Tread (mm)	38
Swivel Radius (mm)	120
Plate Size (mm)	105 x 86
Hole Centres (mm)	80 X 60
Top Plate Thickness (mm)	4
Fork Thickness (mm)	4
To Suit Fixing Bolt (mm)	8

BIL GROUP LTD

Porte Marsh Road, Calne, Wiltshire, SN11 9BW

Registered in England No: 2603821

VAT Reg: GB572705729

