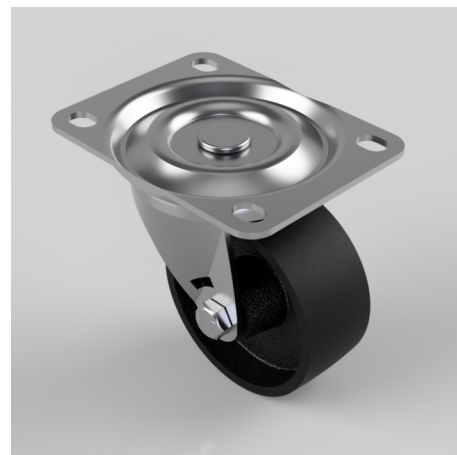


## Cast Iron Plate Swivel Castor 75mm 125kg Load

**Product code: BZH75CI**

Pressed steel swivel castor with a top plate fixing fitted with a black cast iron with a plain bore. Wheel diameter 75mm, tread width 32mm, overall height 95mm, top plate 105mm x 80mm, hole centres 80mm x 60mm. Load capacity 125kg.



|                          |                         |
|--------------------------|-------------------------|
| Diameter (mm)            | 75                      |
| Castor Type              | Swivel                  |
| Fixing Option            | Plate                   |
| Height (mm)              | 95                      |
| Wheel Material           | Cast Iron               |
| Colour / Shore Hardness  | Black Painted Cast Iron |
| Temperature Resistance   | -30 °C TO +80 °C        |
| Bearing Type             | Plain                   |
| Load Capacity (kg)       | 125                     |
| Tread (mm)               | 32                      |
| Swivel Radius (mm)       | 59                      |
| Plate Size (mm)          | 105 X 80                |
| Hole Centres (mm)        | 80 X 60                 |
| Top Plate Thickness (mm) | 2.5                     |
| Fork Thickness (mm)      | 2.5                     |
| To Suit Fixing Bolt (mm) | 8                       |

## BIL GROUP LTD

Porte Marsh Road, Calne, Wiltshire, SN11 9BW

Registered in England No: 2603821

VAT Reg: GB572705729

