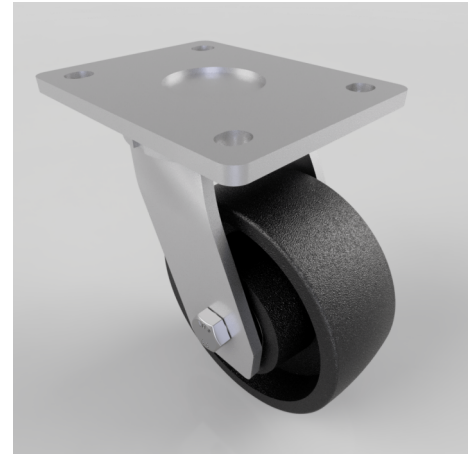


## Cast Iron Plate Swivel Castor 125mm 550kg Load

**Product code: BZMJ125CIBJ**

Fabricated white zinc ROHS plated swivel castor with a top plate fixing fitted with a black painted cast iron wheel with ball bearing. Wheel diameter 125mm, tread width 50mm, overall height 165mm, top plate 138mm x 110mm, hole centres 105mm x 80mm/75mm. Load capacity 550kg.



Diameter (mm)	125
Fixing Option	Plate
Castor Type	Swivel
Bearing Type	Ball
Height (mm)	165
Plate Size (mm)	138 x 110
Hole Centres (mm)	105 x 80/75
To Suit Fixing Bolt (mm)	10
Wheel Material	Cast Iron
Colour / Shore Hardness	Black Painted Cast Iron
Temperature Resistance	-30 °C TO +80 °C
Top Plate Thickness (mm)	7
Fork Thickness (mm)	6
Swivel Radius (mm)	101
Load Capacity (kg)	550
Tread (mm)	50

### BIL GROUP LTD

Porte Marsh Road, Calne, Wiltshire, SN11 9BW

Registered in England No: 2603821

VAT Reg: GB572705729

