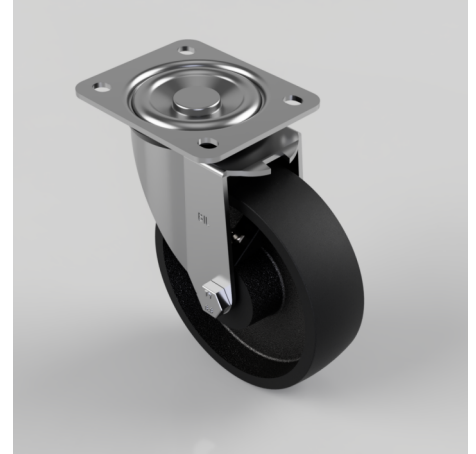


Cast Iron Plate Swivel Castor 125mm 300kg Load

Product code: BZEH125CI

Pressed steel swivel castor with a top plate fixing fitted with a cast iron wheel with a plain bore. Wheel diameter 125mm, tread width 38mm, overall height 156mm, top plate 105mm x 86mm, hole centres 80mm x 60mm. Load capacity 300kg. Max Temp 80c



Diameter (mm)	125
Castor Type	Swivel
Fixing Option	Plate
Height (mm)	156
Wheel Material	Cast Iron
Colour / Shore Hardness	Black Painted Cast Iron
Temperature Resistance	-30 °C TO +80 °C
Bearing Type	Plain
Load Capacity (kg)	300
Tread (mm)	38
Swivel Radius (mm)	106
Plate Size (mm)	105 x 86
Hole Centres (mm)	80 X 60
Top Plate Thickness (mm)	3
Fork Thickness (mm)	3
To Suit Fixing Bolt (mm)	8

BIL GROUP LTD

Porte Marsh Road, Calne, Wiltshire, SN11 9BW

Registered in England No: 2603821

VAT Reg: GB572705729

