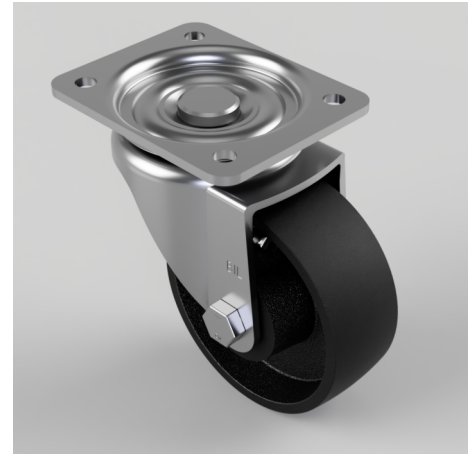


## Cast Iron Plate Swivel Castor 100mm 350kg Load

**Product code: BZH100CIHT**

Pressed steel swivel castor with a top plate fixing fitted with a cast iron wheel with a plain bore. Wheel diameter 100mm, tread width 38mm, overall height 128mm, top plate 105mm x 86mm, hole centres 80mm x 60mm. Load capacity 350kg at 300c maximum temperature. PLEASE NOTE high temperature grease but no swivel seals in swivel head.



Diameter (mm)	100
Fixing Option	Plate
Castor Type	Swivel
Plate Size (mm)	105 x 86
Hole Centres (mm)	80 X 60
Height (mm)	128
Bearing Type	Plain
Swivel Radius (mm)	90
Wheel Material	Cast Iron
Colour / Shore Hardness	Black Painted Cast Iron
Temperature Resistance	-30°C to 300°C
Load Capacity (kg)	350
Top Plate Thickness (mm)	4
Fork Thickness (mm)	4

## BIL GROUP LTD

Porte Marsh Road, Calne, Wiltshire, SN11 9BW

Registered in England No: 2603821

VAT Reg: GB572705729

