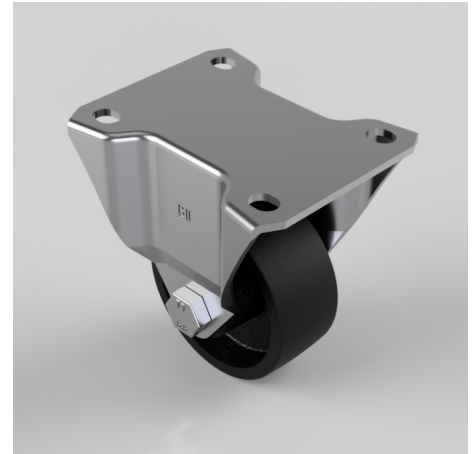


## Cast Iron Plate Fixed Castor 75mm 190kg Load

**Product code: BZHDF75CI**

Pressed steel fixed castor with a top plate fixing fitted with a plain bore cast iron wheel. Wheel diameter 75mm, tread width 32mm, overall height 108mm, top plate 105mm x 86mm, hole centres 80mm x 60mm. Load capacity 190kg.



Diameter (mm)	75
Castor Type	Fixed
Fixing Option	Plate
Height (mm)	108
Wheel Material	Cast Iron
Colour / Shore Hardness	Black Painted Cast Iron
Temperature Resistance	-30 °C TO +80 °C
Bearing Type	Plain
Load Capacity (kg)	190
Tread (mm)	32
Plate Size (mm)	105 x 86
Hole Centres (mm)	80 X 60
Top Plate Thickness (mm)	3
Fork Thickness (mm)	3
To Suit Fixing Bolt (mm)	8

## BIL GROUP LTD

Porte Marsh Road, Calne, Wiltshire, SN11 9BW

Registered in England No: 2603821

VAT Reg: GB572705729

